

READ BEFORE INSTALLING

Quick Installation Guide USB Braille Display

1. Warning

Before connecting the USB Braille Display to your computer you must install the bundled software.

2. Software Installation

Insert the CD-ROM into the drive.

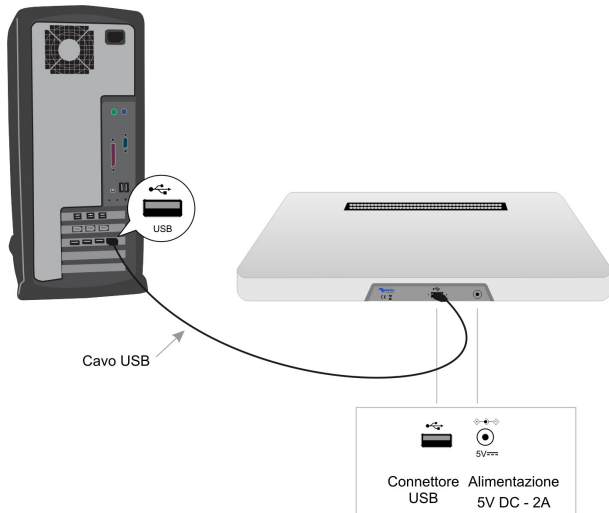
Install the software **"setup.exe"** on the CD-ROM under the folder **BarraBraille_USB**.

Follow the instructions on screen. When installation is complete go to the hardware connection.

3. Connecting USB Braille Display

Proceed as follows:

1. Check for an available USB port on your PC;
2. Connect the supplied USB cable between the USB connector on the PC and the USB connector of the Braille Display;

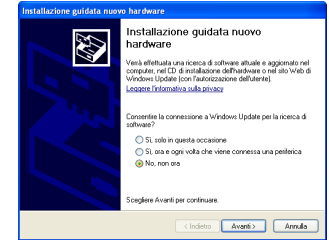


3. Place the **Braille Display** under the keyboard of a PC, so you have to read the Braille characters below the spacebar on the keyboard;
4. The connection to the PC via the USB port can power the Braille Display with just voltage supplied by the USB controller.
5. **Install the driver** following the next example screens.

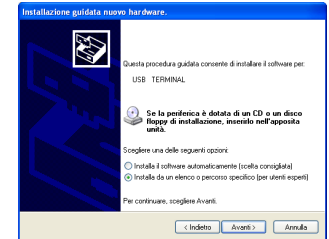
*If there are power problems
use an external power supply 5v dc*

4. USB Driver Installation

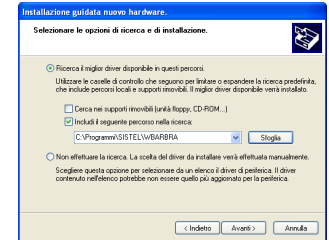
Do not connect to Windows Update and follow the installation



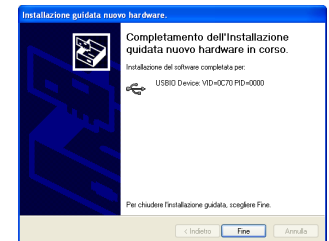
Install from a list or specific location



Search for the driver to C: \ Program Files \ SISTEL \ WBARBRA



The wizard was completed successfully.



The USB Braille Display is installed correctly.

